

# Spectator Behaviour

@playbytherules



create a positive culture



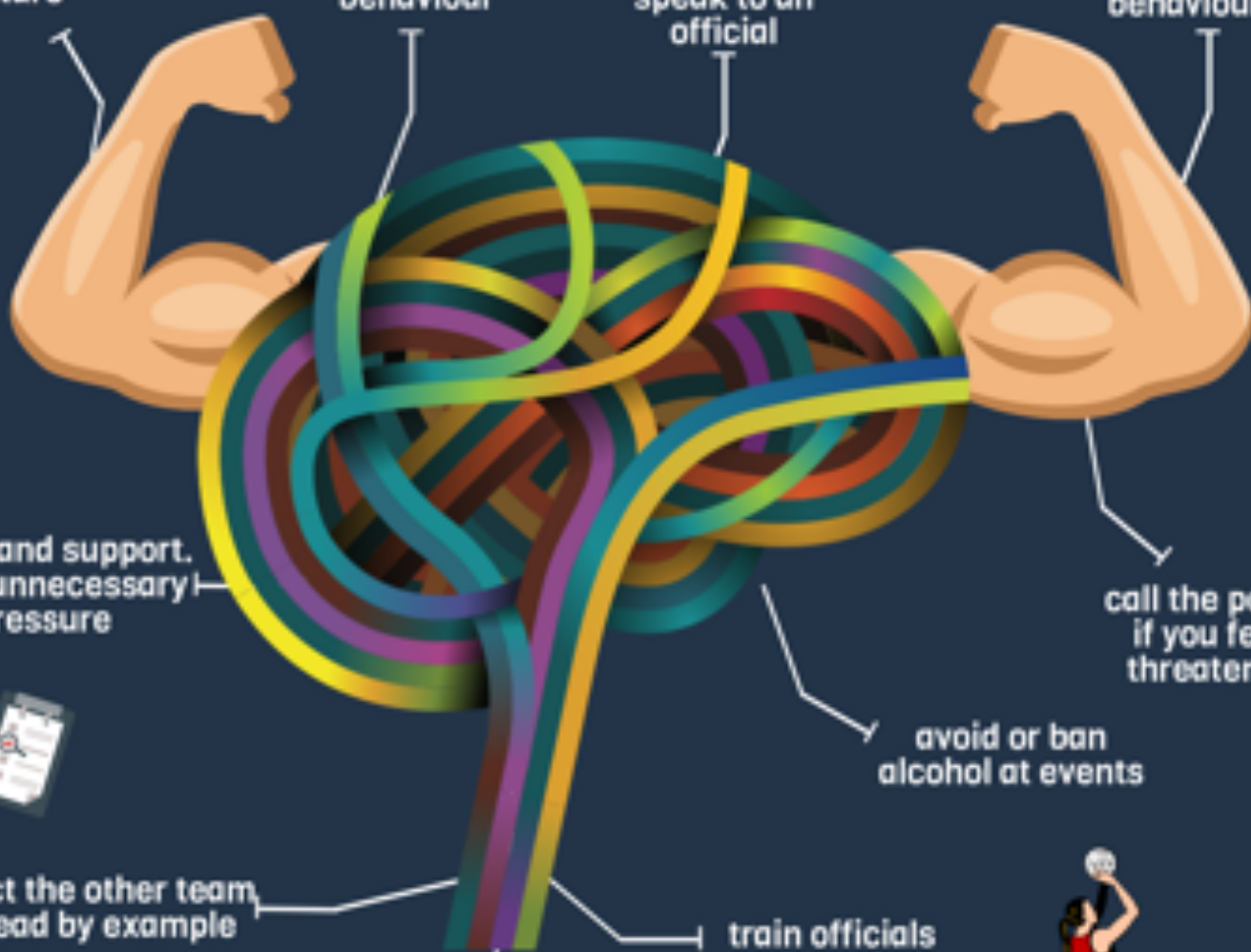
refrain from threatening behaviour



ask people to stop bad behaviour or speak to an official



report inappropriate behaviour



praise and support, avoid unnecessary pressure



respect the other team and lead by example



reinforce messages of fairness and respectful behaviour



making sport inclusive, safe and fair.

train officials and coaches



avoid or ban alcohol at events

call the police if you feel threatened



For the full policy go to <https://www.playbytherules.net.au/resources/templates/spectator-behaviour-policy>